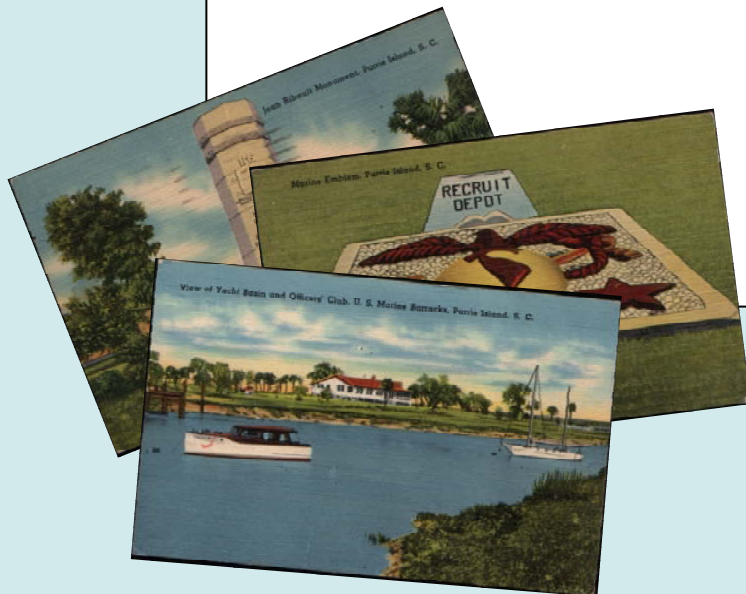




# Parris Island Post Cards from World War II

## Part I : 1941



**B. B. McBreen**  
Editor, 2008

# Parris Island Post Cards from World War II

## **Parris Island Marine Corps Recruit Depot during World War II**

During World War II, Marine Corps recruits training aboard Parris Island sent thousands of post cards home to their families. Today, in 2008, almost seventy years later, each card is a historical snapshot of what Parris Island looked like during the war years.

## **Tichnor Brothers Post Cards of Parris Island**

Tichnor Brothers, a leading American post card publisher, was founded in 1907 in Boston, Massachusetts. By 1921, Tichnor Brothers had emerged as the second largest post card manufacturer in America.

In 1930, a new printing process enabled brightly colored post cards to be printed on heavy paper that had the look and feel of textured linen. Tichnor Brothers started publishing “linen” post cards in 1941. During World War II, Tichnor published three series, totaling thirty-five cards, of Parris Island.

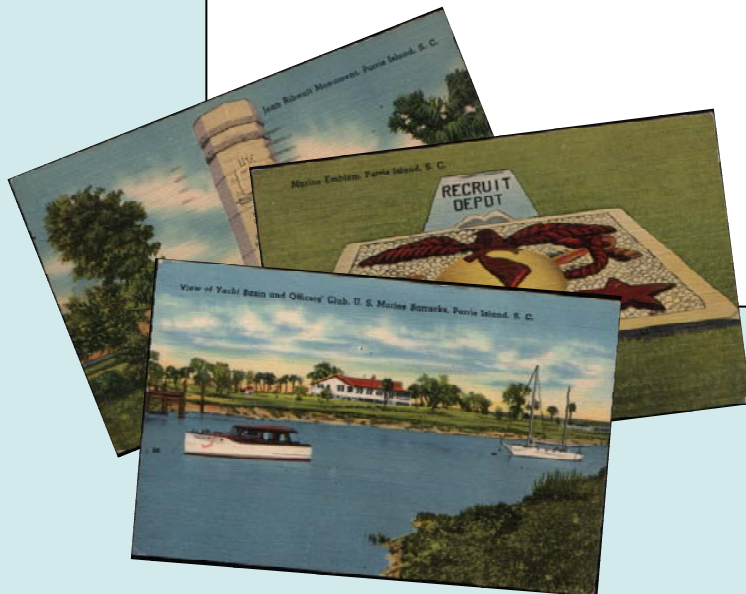
**The Tichnor Collection**, a unique visual record of America in the 1940s, is held by the Boston Public Library in Boston, Massachusetts.

# Parris Island Post Cards from World War II

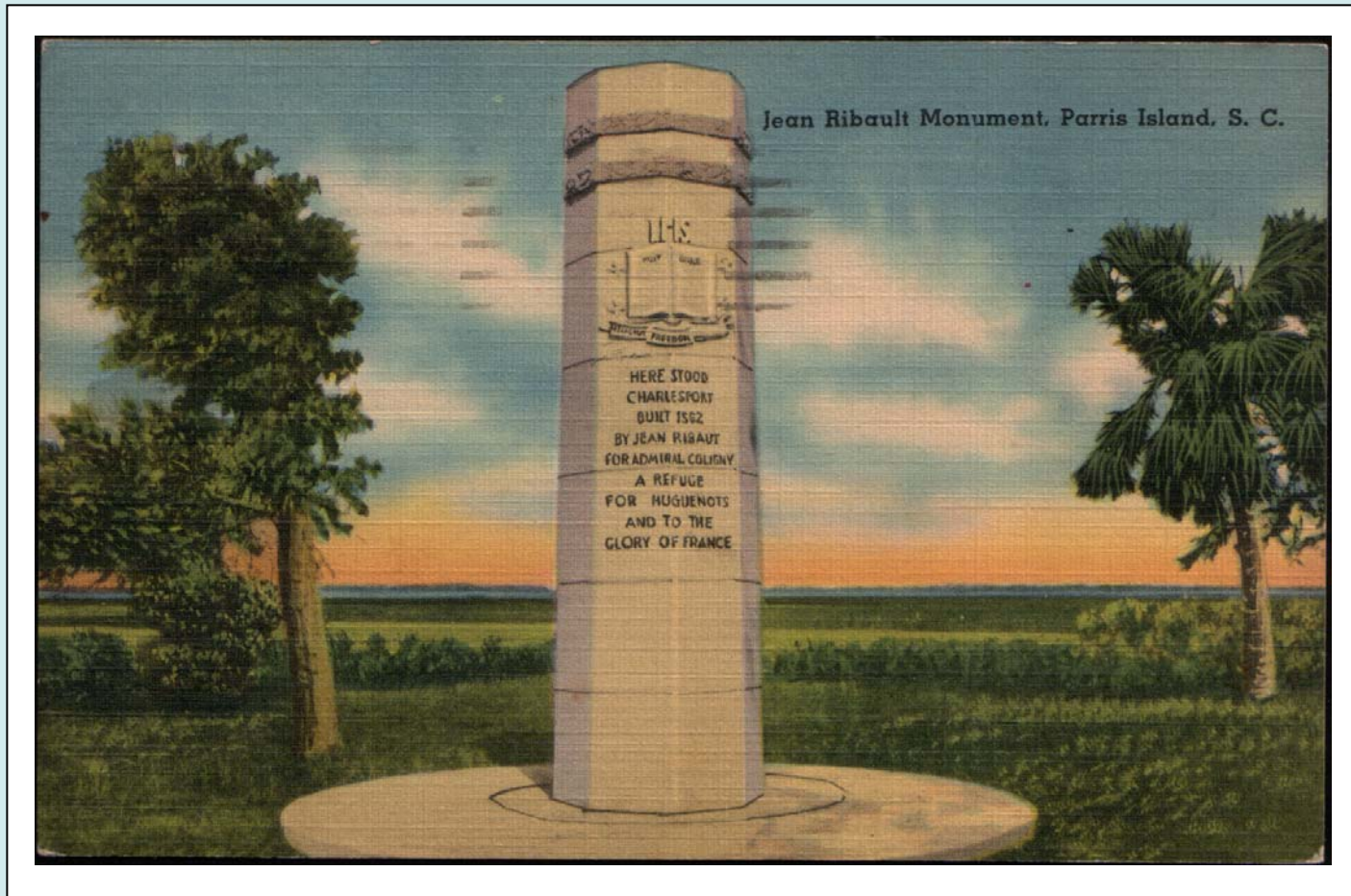
## Part I: Tichnor Brothers 1941

In 1941, as part of their first “linen” series of post cards, Tichnor published ten (10) images of Parris Island, numbered **71051** through **71060**. Before Pearl Harbor, America was preparing for war, and the facilities aboard Parris Island were being rapidly expanded to meet the new training requirements of the Marine Corps.

The title of the card, one line of serif text, appears on the front. The serial number of each card appears in the lower left-hand corner of the reverse side. The card size is 3.5 x 5.5 inches.



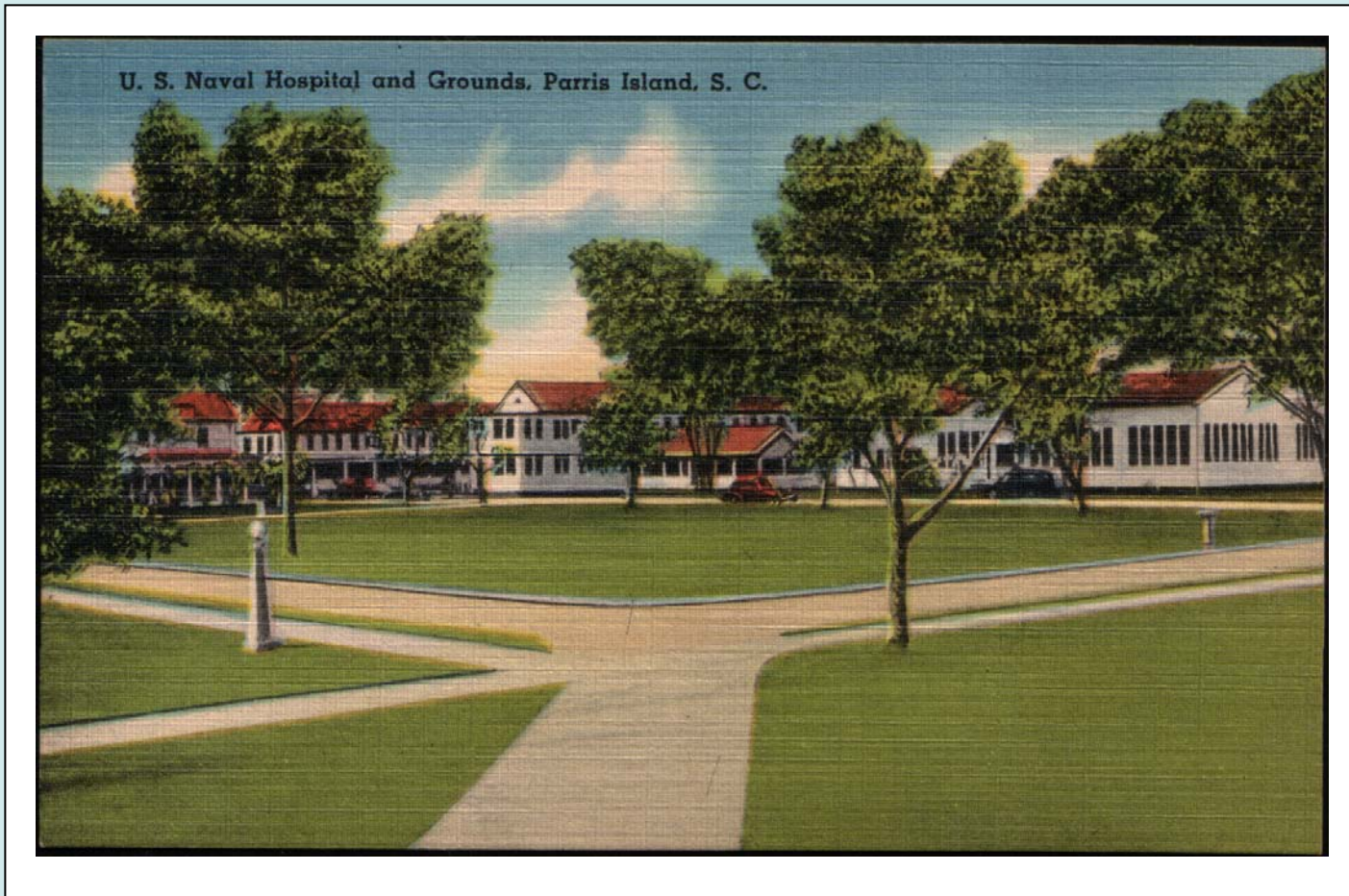
# Jean Ribault Monument, Parris Island, S. C.



Tichnor 71051: 1941

**Jean Ribault Monument.** French Huguenots landed and built a fort –“Charlesfort” – on the southern tip of Parris Island in 1562. After World War I, a Marine officer discovered and excavated the site. The 13th Commandant of the Marine Corps, Major General John A. Lejeune, spoke at the 1925 unveiling of this monument. Today, in 2008, the monument and the protected remains of the fort still stand on the southeast shore of Parris Island, beyond the golf course.

# U. S. Naval Hospital and Grounds, Parris Island, S. C.



Tichnor 71052: 1941

**U.S. Naval Hospital and Grounds.** The original wooden U. S. Naval Hospital buildings were constructed during World War I at the east end of the base. The hospital complex was greatly expanded during World War II. In 1946, a new Naval Hospital was built off-base and these wooden buildings on Parris Island were razed. Today, in 2008, this is the site of the *Four Winds* club.

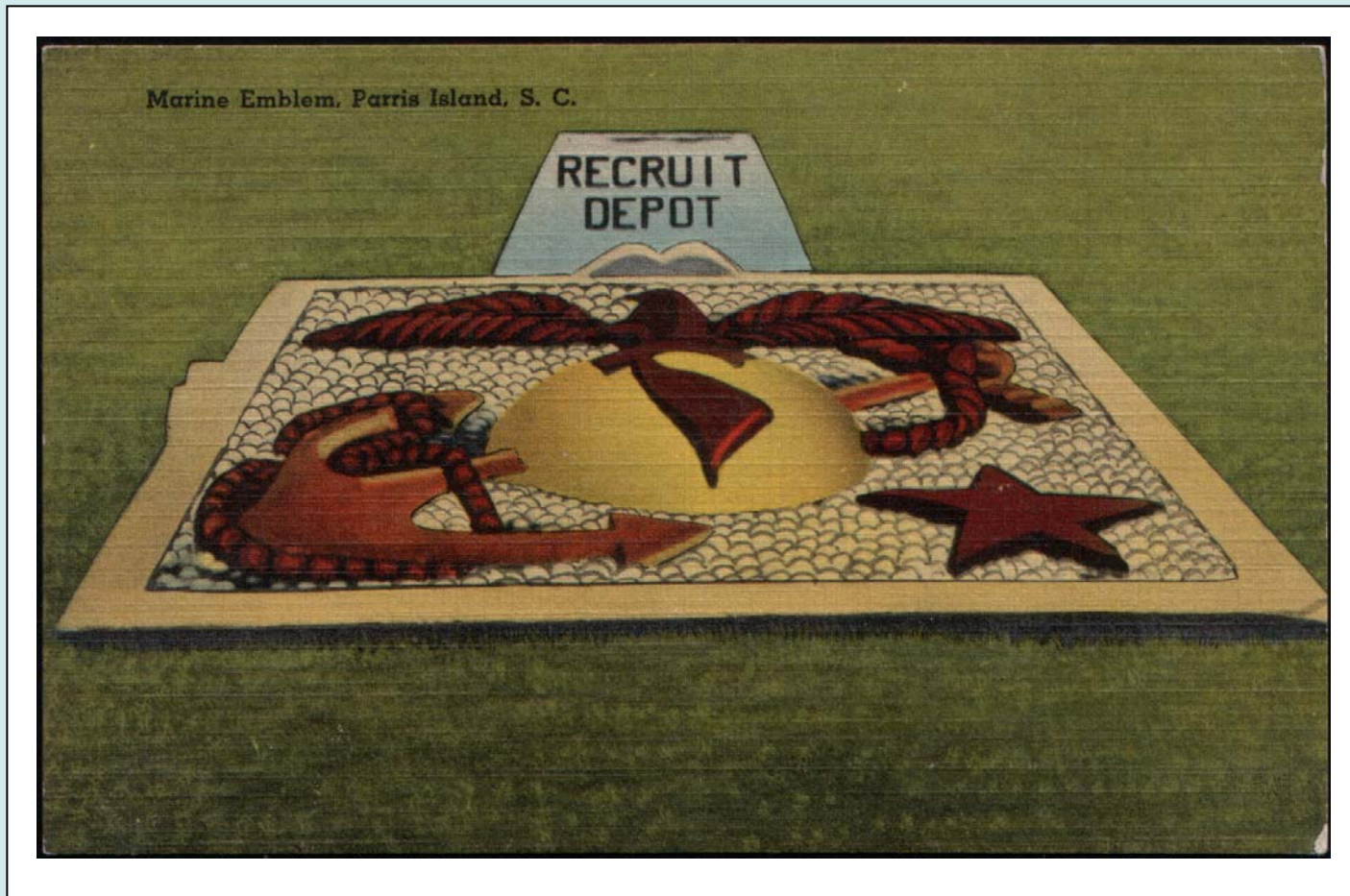
## View of Yacht Basin and Officers' Club, U. S. Marine Barracks, Parris Island, S. C.



Tichnor 71053: 1941

**View of Yacht Basin and Officers' Club.** The Yacht Basin is located near the officer's housing area. Today, in 2008, the Yacht Basin is too shallow to use, having been silted up over the years. The building in the background is the Officer's Club. The original club building, dating from 1918, was moved in 1939 from adjacent to the Lyceum to this location at the Yacht Basin. This same club, with only minor renovations, is known today in 2008, as *Traditions*.

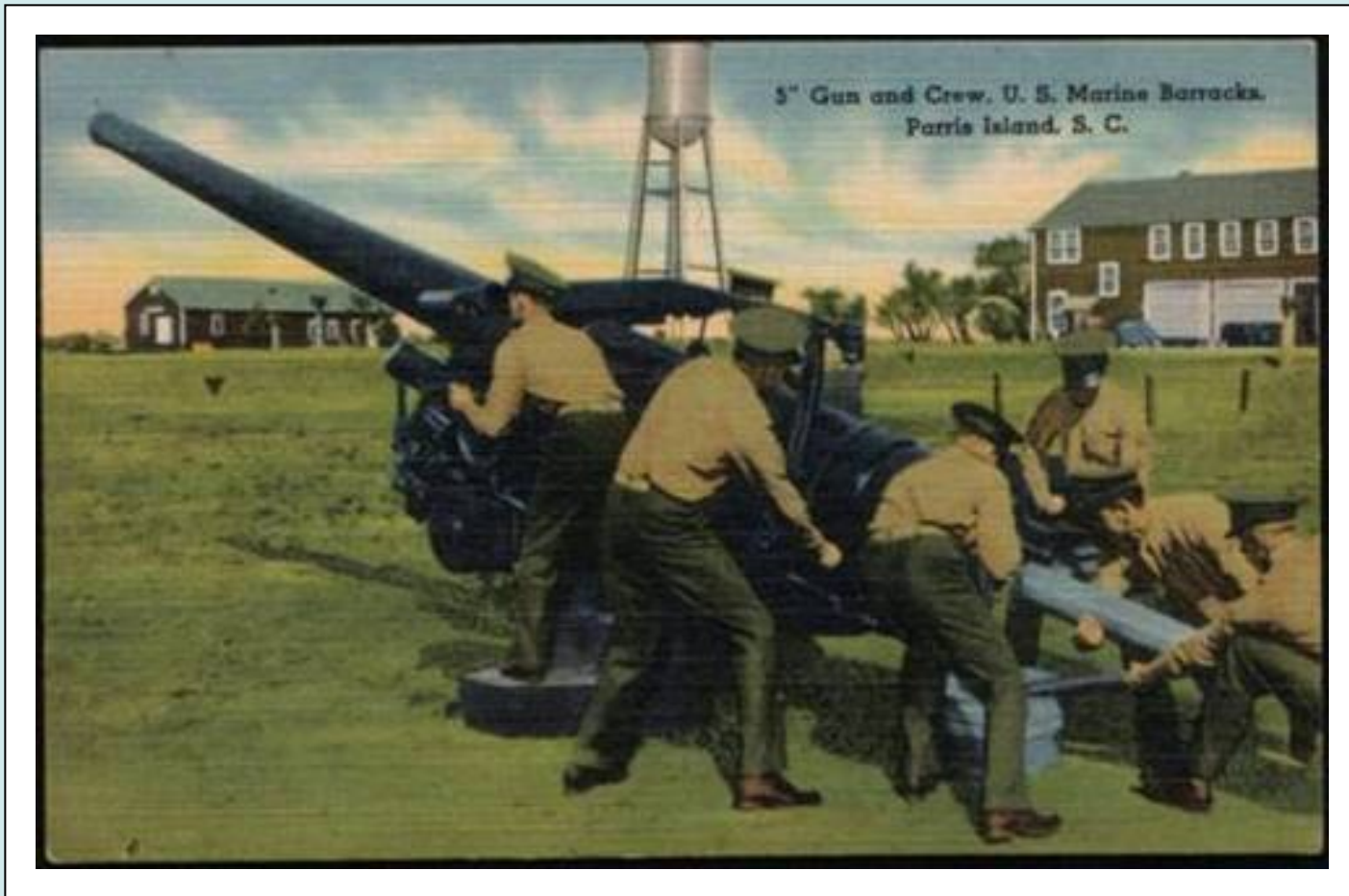
## Marine Emblem, Parris Island, S. C.



Tichnor 71054: 1941

**Marine Emblem.** The Marine Corps Emblem, adopted in 1868, consists of an eagle, globe, and anchor. The location of this 1941 emblem display is unknown. The term “Recruit Depot” was used during WWII to refer only to those facilities that trained recruits. The base was then officially known as “Marine Barracks, Parris Island. The entire base was officially titled “Recruit Depot Parris Island” in December 1946.

## 5" Gun and Crew, U. S. Marine Barracks, Parris Island, S. C.



Tichnor 71055: 1941

**5" Gun and Crew.** Marines in service uniforms conduct gun drill on a 5" anti-aircraft piece. Prior to the adoption of the green herringbone twill "dungaree" utility uniform in 1941, Marines executed field drills and maneuvers in the service uniform. Artillery Marines of the 11th Marine Regiment and multiple Marine Defense Battalions trained aboard Parris Island during 1941.



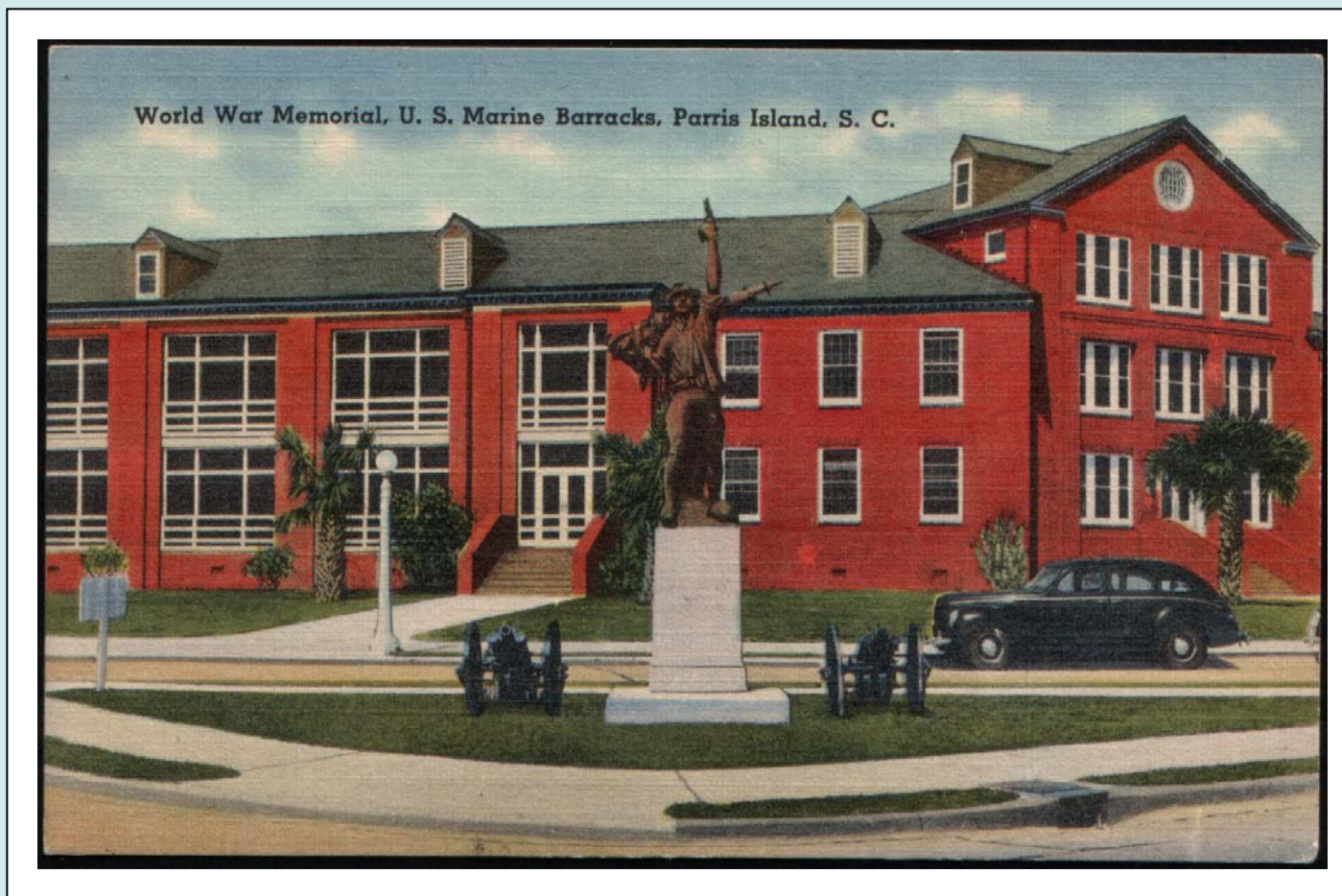
## Saluting Battery and Headquarters, U. S. Marine Barracks, Parris Island, S. C.



Tichnor 71056: 1941

**Saluting Battery and Headquarters.** The old brick Headquarters Building was built adjacent to the dry dock in 1900. Note the two stars on the flag, indicating that the building was still occupied by the Commanding General in 1941 during construction of the new Headquarters Building. In the background is the Lyceum Building, originally constructed in 1900 as the machine shop for the dry dock across the street. Today, in 2008, the Lyceum is used as a hall for formal events. The saluting guns are gone, but their cement pads remain.

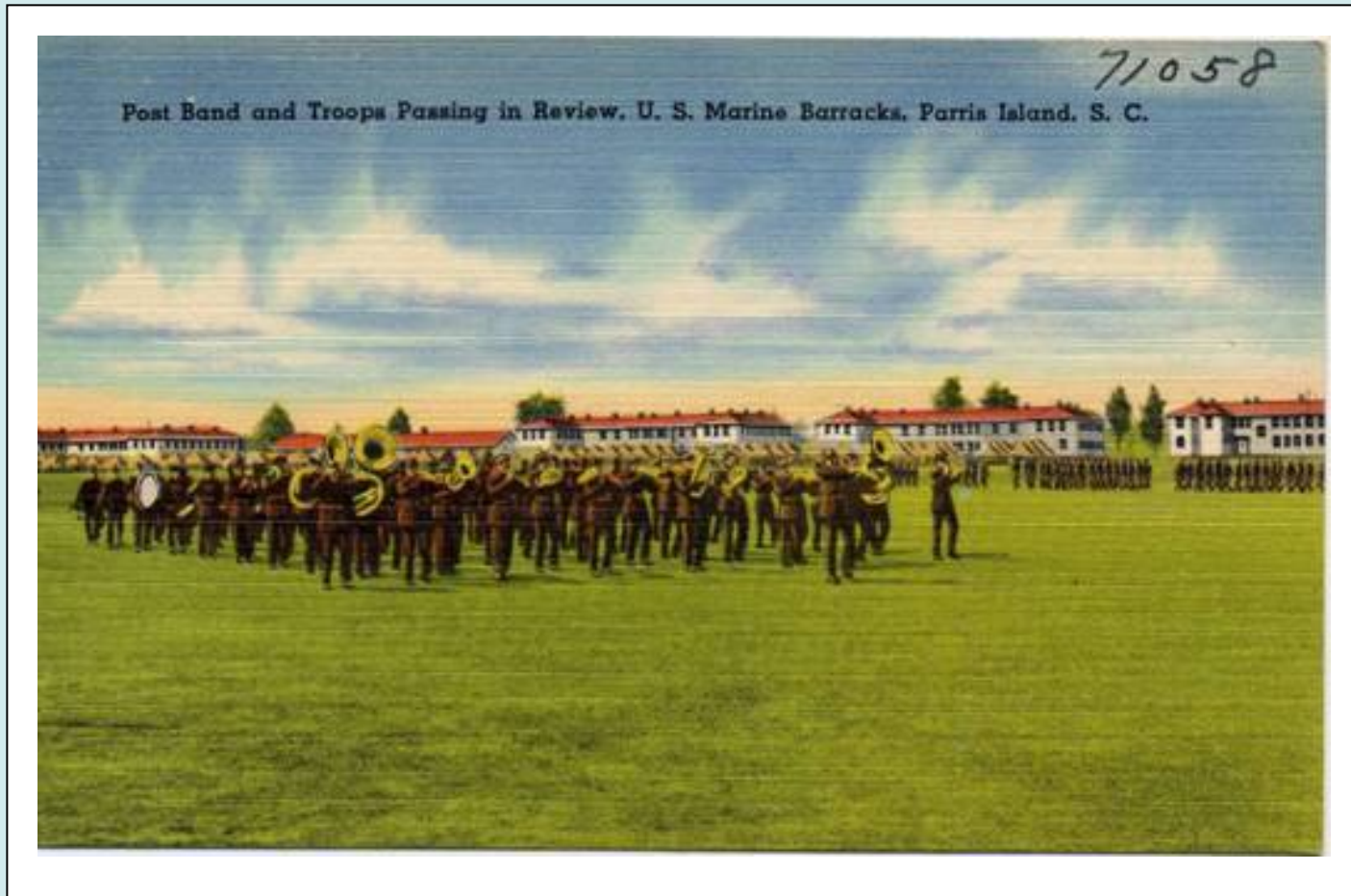
## World War Memorial, U. S. Marine Barracks, Parris Island, S. C.



Tichnor 71057: 1941

**World War Memorial.** “Iron Mike,” the 1924 bronze statue commemorating Marines who died in WWI, was dedicated by the 13th Commandant of the Marine Corps, MajGen John A. Lejeune. The statue was created by sculptor Robert Ingersoll Aiken. It was moved from its original location near the museum to this corner location around 1940. Note that in 1941, prior to the Second World War, World War I was known as “The World War.” The Headquarters & Service Battalion Building was built in 1938.

## Post Band and Troops Passing in Review, U. S. Marine Barracks, Parris Island, S. C.



Tichnor 71058: 1941

**Post Band and Troops Passing in Review.** The post band marches across the parade deck in front of the new 1st Recruit Training Battalion barracks. The first white wooden two-story World War II barracks were built in 1940. The dirt parade deck, artificially colored green on this post card, was paved in 1942. The tents in the left background were temporarily used to house the large number of recruits training aboard Parris Island. Hundreds of Quonset huts were later constructed for temporary war-time barracks.

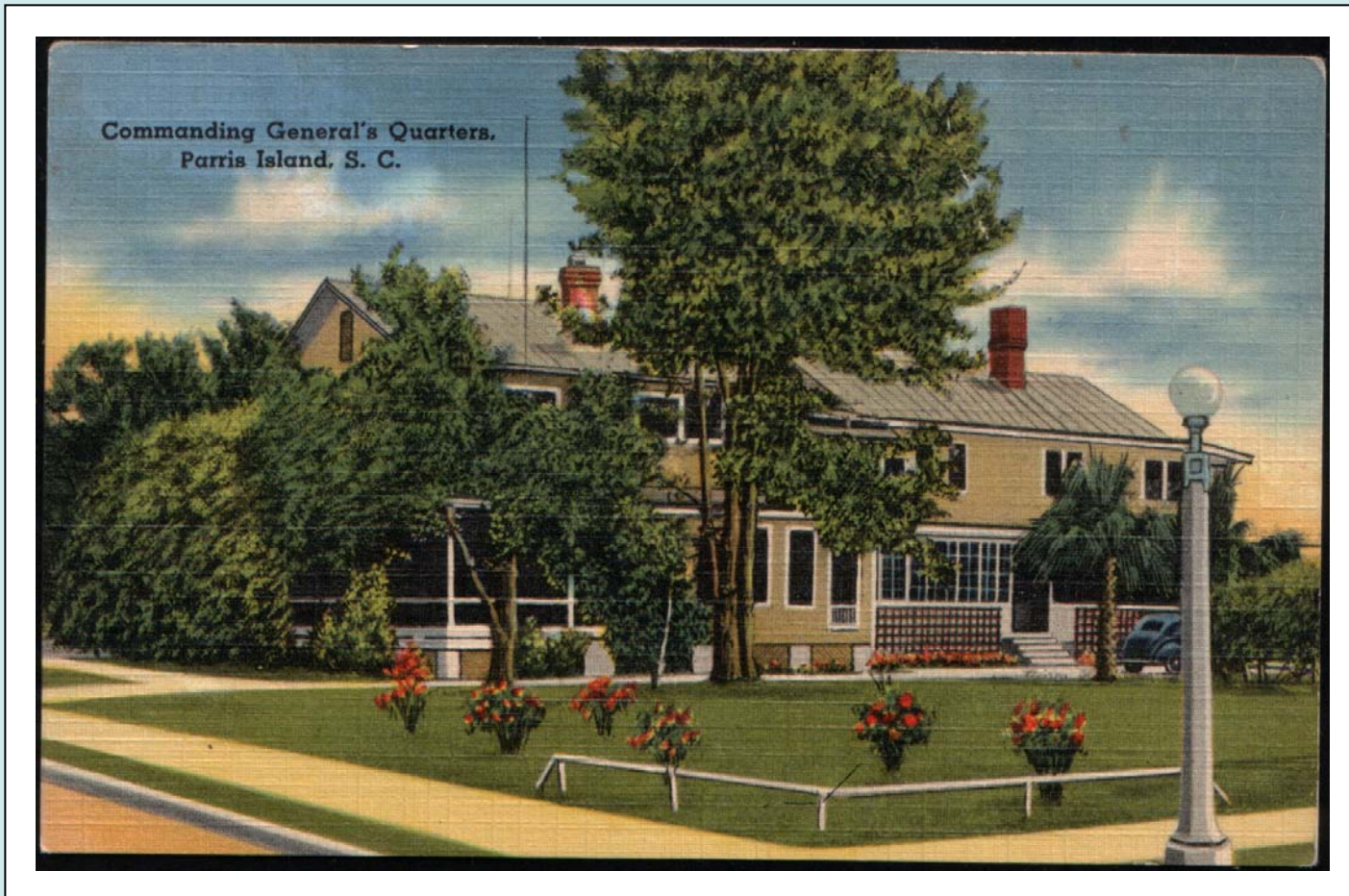
## Headquarters Recruit Depot, U. S. Marine Barracks, Parris Island, S. C.



Tichnor 71059: 1941

**Headquarters Recruit Depot.** The Headquarters & Service Battalion Building was built in 1938. It was used during World War II as the Recruit Depot Headquarters. Today, in 2008, the trees along the right-hand side of the building have grown up to block the long view of that side of the building. This is the same building shown in postcard 71057.

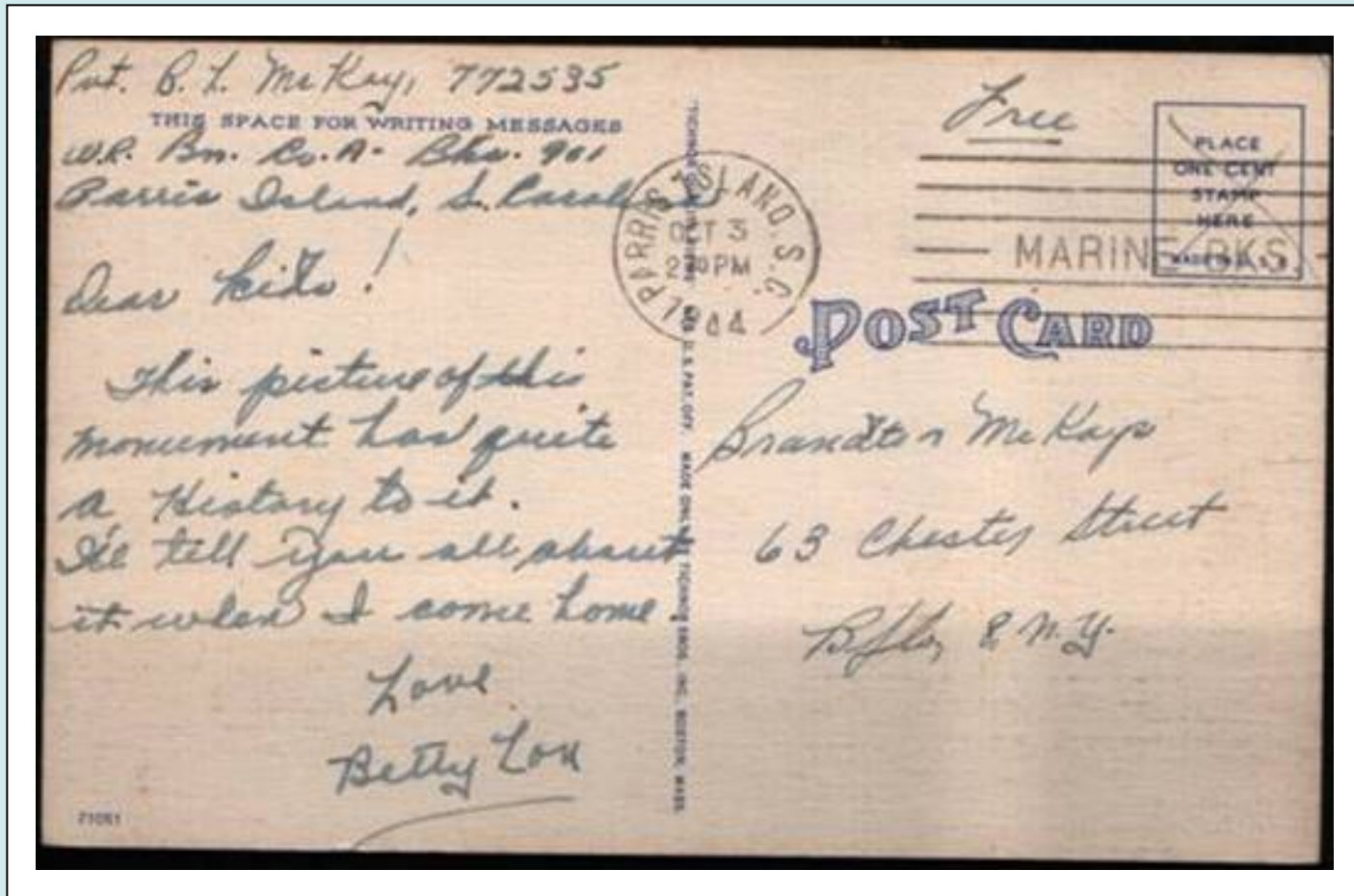
## Commanding General's Quarters, Parris Island, S. C.



Tichnor 71060: 1941

**Commanding General's Quarters.** The Commanding General's Quarters was originally built around 1900 as the quarters for the Dock Superintendent. The quarters are located on the same block as the Lyceum across from the dry dock. This house has been expanded multiple times. It is still used today, in 2008, as the Commanding General's residence.

## Reverse: Jean Ribault Monument, Parris Island, S. C.



Tichnor 71051: 1941

**Marine Private Betty Lou McKay**, service number 772535, Women's Recruit Battalion, Company "A", Barracks 901, writes home to her family in Buffalo, New York. Note the Postmark: "Marine Barracks, Parris Island, S.C., October 3, 1944." Note also, the "Free" notation – service members received free postage during World War II. The Tichnor serial number, 71051 [**Jean Ribault Monument**], is at the bottom left.

# Acknowledgements

The 1st Recruit Training Battalion (1st RTBn) post card collection was collected and donated by Sergeant **Mike Thompson**, 1st RTBn 1968

The 1st RTBn conference room historical display was designed and constructed by Staff Sergeant **Benjamin E. Baxley**, 1st RTBn 2007 and updated by Sergeant **C. T. Tatum**, 1st RTBn 2008

Computer images by Major **Rob James**, 1st RTBn 2008  
Research by LtCol **B. B. McBreen**, 1st RTBn 2008

Special thanks to:

Dr **Stephen Wise**, Parris Island Museum, Parris Island, SC  
**Debra Gust**, Lake County Discovery Museum, Waucona, IL  
**Jane Winton**, Boston Public Library Print Department, Boston, MA

[Part I : Tichnor 1941](#)

[Part II : Tichnor 1942](#)

[Part III : Curteich 1942](#)

[Part IV : Tichnor 1945](#)